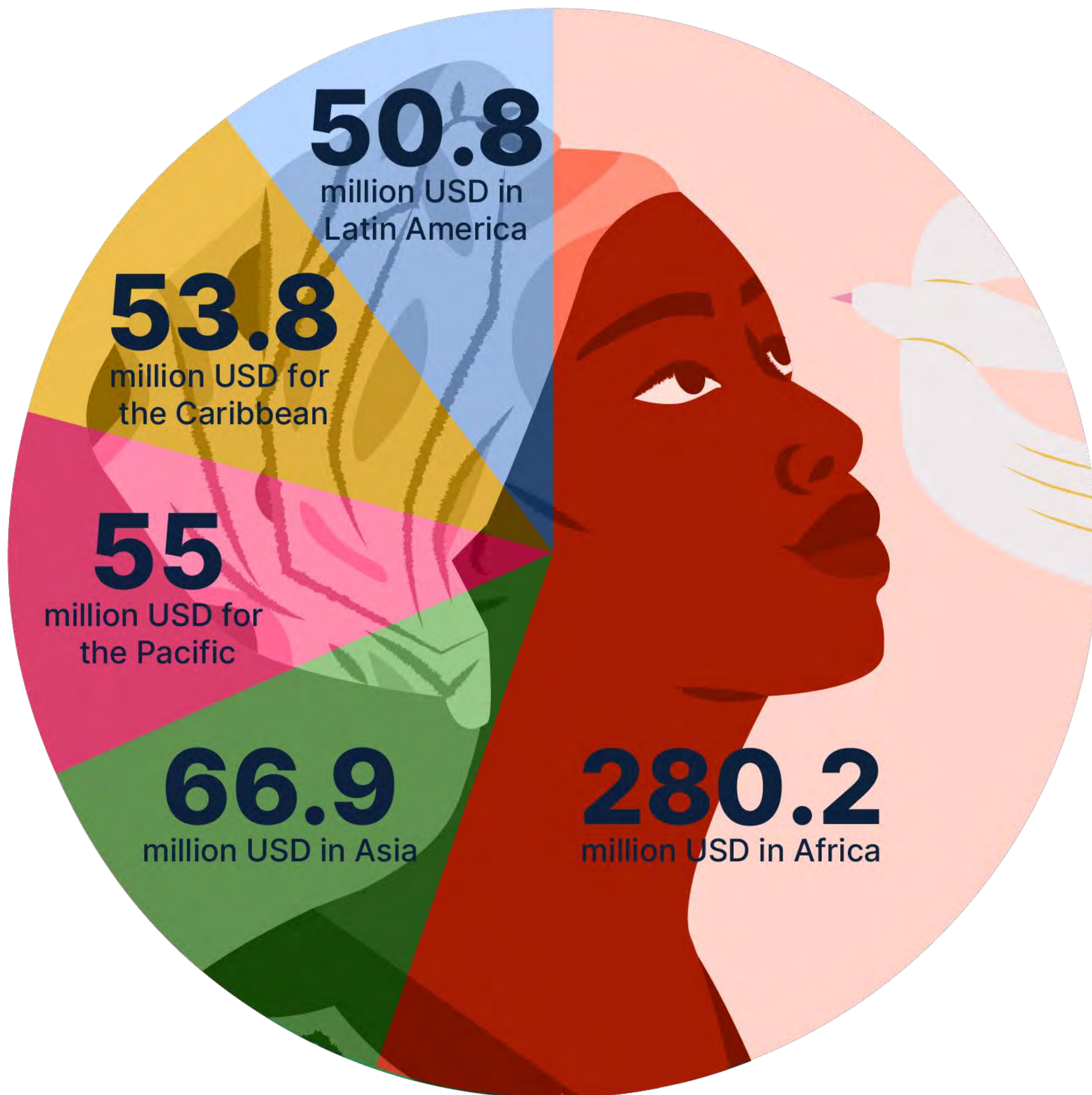


Infographic of funding and country reach

Over 5 years, Spotlight Initiative has invested 506.9 million USD across its 34 programmes.



122
countries
reached

As of 2022

26 through Spotlight Initiative's country programmes

30 through Spotlight Initiative's two civil society grant giving programmes

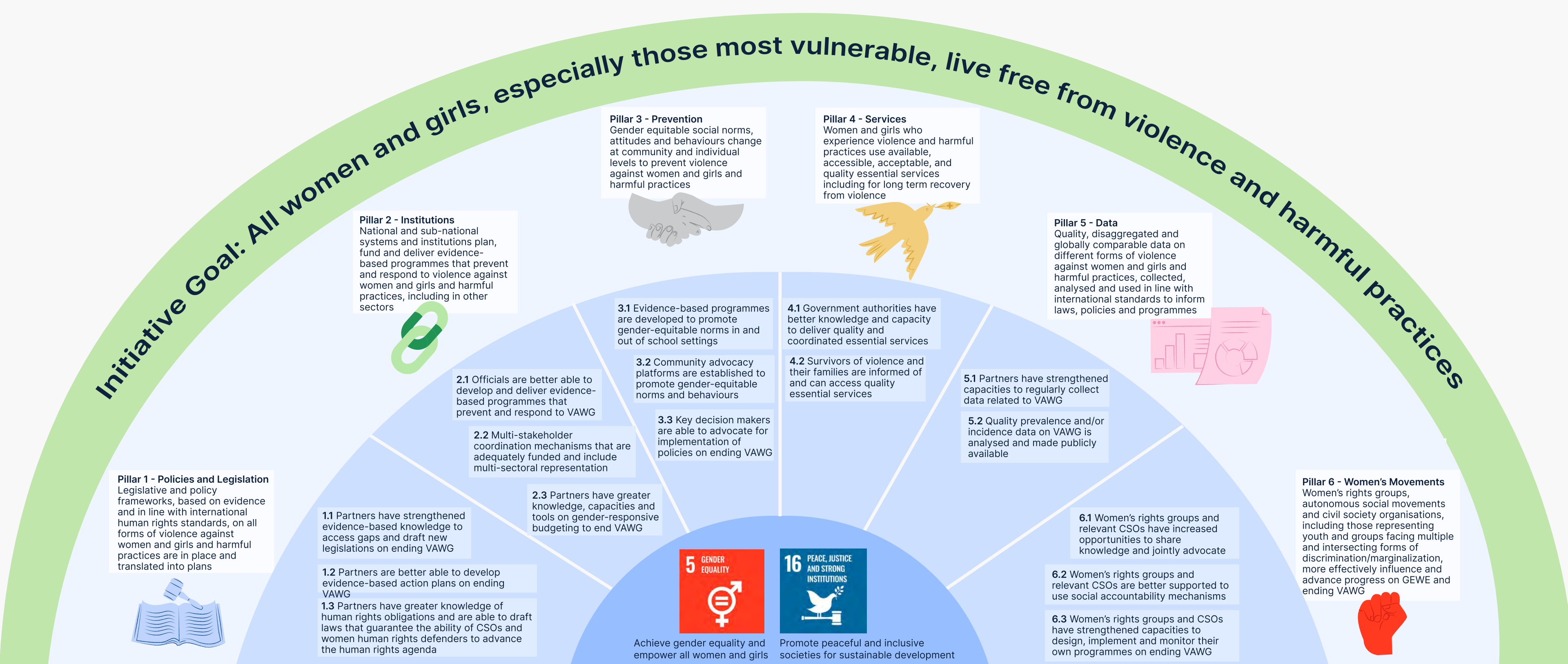
66 through Spotlight Initiative's five regional programmes

Theory of Change

Spotlight Initiative's Theory of Change emphasises that the most effective way to end violence against women and girls is through a well-funded, rights-based and comprehensive approach that works across diverse areas. This approach prioritises the engagement of feminist and women's rights organisations and movements and civil society more broadly. Spotlight Initiative programmes focus on addressing the root causes of violence and gender inequity by implementing their approach across six pillars of work.

There is a need to develop and implement integrated interventions to create the legal basis for equity and the elimination of violence against women and girls (Pillar 1), to strengthen diverse national and local institutions to promote gender equality and women's rights (Pillar 2), to tackle various factors contributing to violence, such as harmful social norms, practices and beliefs (Pillar 3), to increase access and strengthen the quality of essential services for survivors (Pillar 4), to build a robust evidence base and national databases to monitor and support efforts to end violence against women and girls (Pillar 5), and to support and deepen women's movement building globally, nationally and locally (Pillar 6). See the visual of the Theory of Change below.

Spotlight Initiative Theory of Change



Spotlight Initiative's model is unique and focused on innovation at many levels; it is a demonstration fund for the SDGs, as well as the power of UN reform, and offers diverse solutions on an issue as sensitive as ending violence against women and girls. In order to do this effectively, Spotlight Initiative's model relies on deep partnerships from civil society, government and feminist organisations within a country and from UN agencies coordinating together.